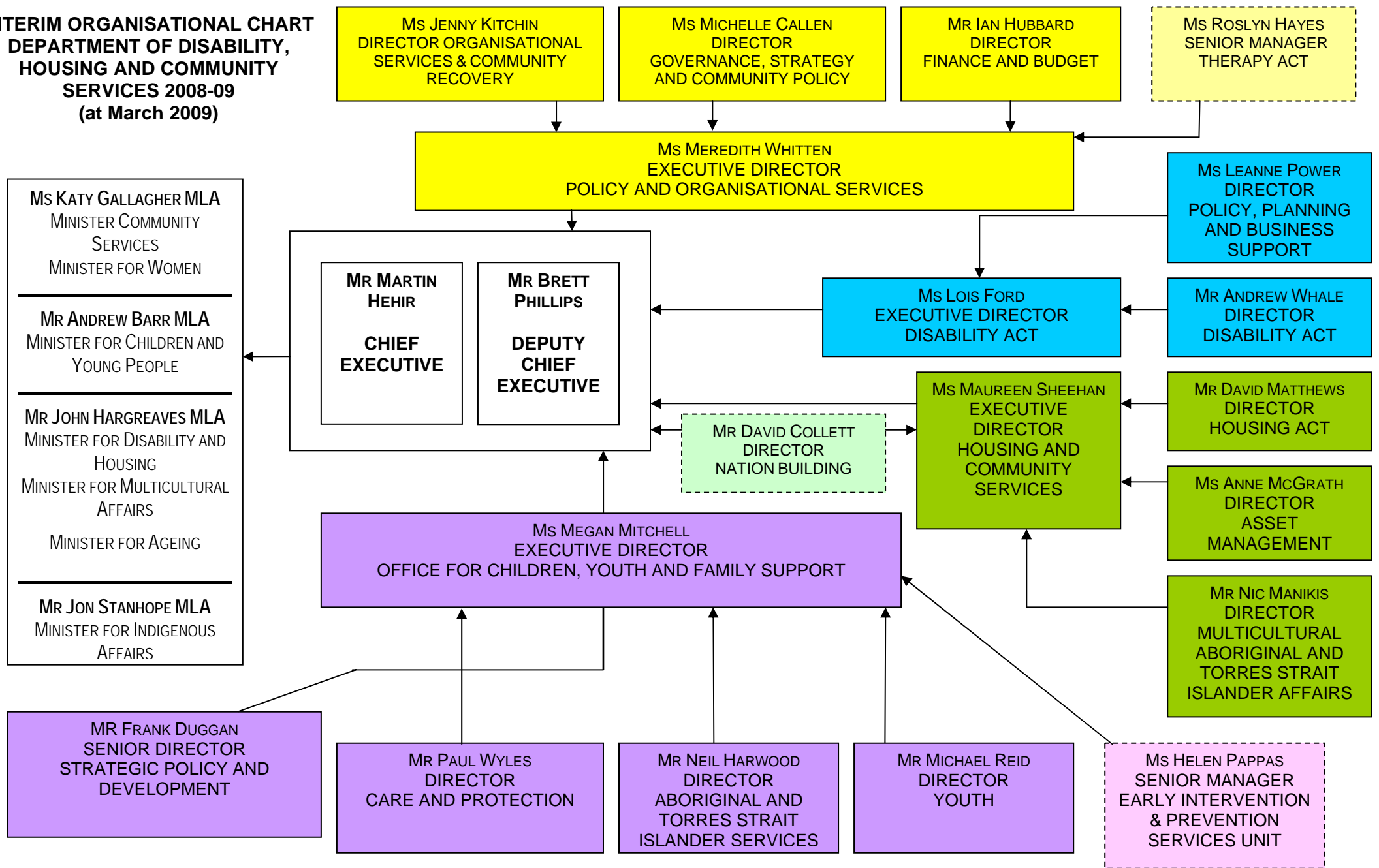


**INTERIM ORGANISATIONAL CHART  
DEPARTMENT OF DISABILITY,  
HOUSING AND COMMUNITY  
SERVICES 2008-09  
(at March 2009)**



Ms Sandra Lambert, Chief Executive and Ms Bronwen Overton-Clarke, Executive Director, Policy and Organisational Services have been seconded to the ACT Stimulus Package Taskforce until November 2009